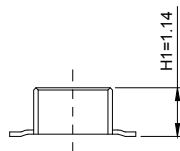
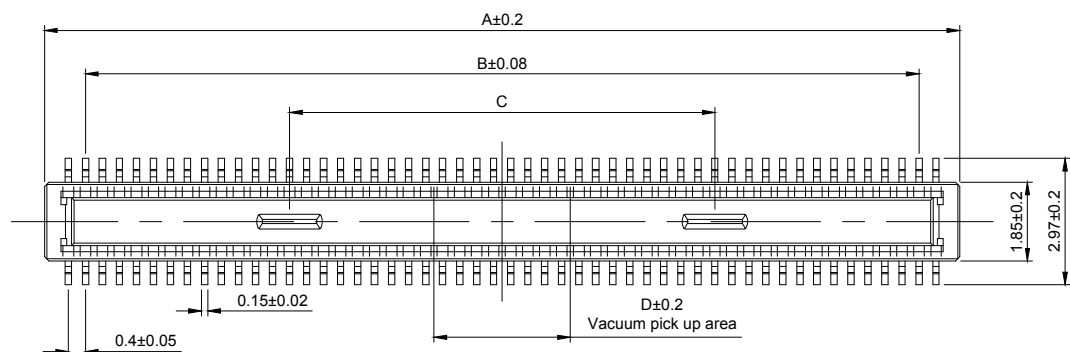


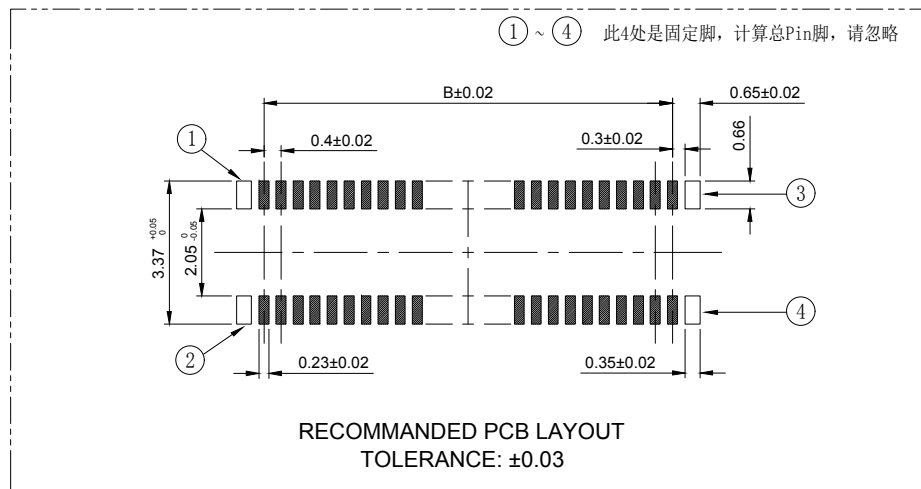
-NOTES-

1. MATERIAL SEE TABLE;
2. ELECTRICAL PERFORMANCES:
 - 2-1. RATED CURRENT: 0.3A;
 - 2-2. CONTACT RESISTANCE: 90mΩ Max. with AC 20mV, 1kHz and 1mA.;
 - 2-3. INSULATION RESISTANCE: 50mΩ min. With DC 100v.;
 - 2-4. WITHSTANDING VOLTAGE: 100 VAC FOR 1 MINUTE MIN.
3. MECHANICAL PERFORMANCES:
 - 3-1. DURABILITY: 30 CYCLES;
 - 3-2. OPERATION TEMPERATURE: -40°C To +85°C;
 - 3-3. NORMAL INSERT FORCE AT MATED POSITION: 5N MAX;

ASSEMBLY



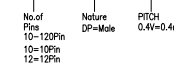
① ~ ④ 此4处是固定脚，计算总Pin脚，请忽略



Ass'y High(H)	Plastic High	
	Male (H1)	Female (H2)
1.50	1.14	1.40
2.00	1.14	1.90
2.50	1.14	2.40
3.00	1.14	2.90
3.50	1.14	3.40
4.00	1.14	3.90

Ordering Information

HC-PBB40C - NDP - 0.4V - 02



Pin	10	12	20	24	30	34	40	44	50	60	70	80	90	100	120
A	3.52	3.92	5.52	6.32	7.52	8.32	9.52	10.32	11.52	13.52	15.52	17.52	19.52	21.52	25.52
B	1.60	2.00	3.60	4.40	5.60	6.40	7.60	8.40	9.60	11.60	13.60	15.60	17.60	19.60	23.60
C	-	-	1.93	2.43	3.18	3.68	5.08	5.86	5.50	6.00	7.00	8.00	9.00	10.00	14.00
D	1.00	1.00	1.00	1.20	1.50	2.30	3.20	3.20	3.20	3.20	3.20	3.20	3.20	3.20	3.20

2	Housing	1	LCP	Glass:30%	Black
1	Terminal	N	C5191H	Ni 50-90u"UNDERPLATING, GOLD FLASH OVER ALL	
ITEM	Part Name	Q'TY	MATERIAL	MATERIAL	REMARK